

January 11, 2021 Preview for
The Town of Campbell Board
of
PUBLIC INFORMATION SESSION
Well Water Testing Around the
La Crosse Regional Airport

January 12, 2021



Agenda

Start time 5:00 PM

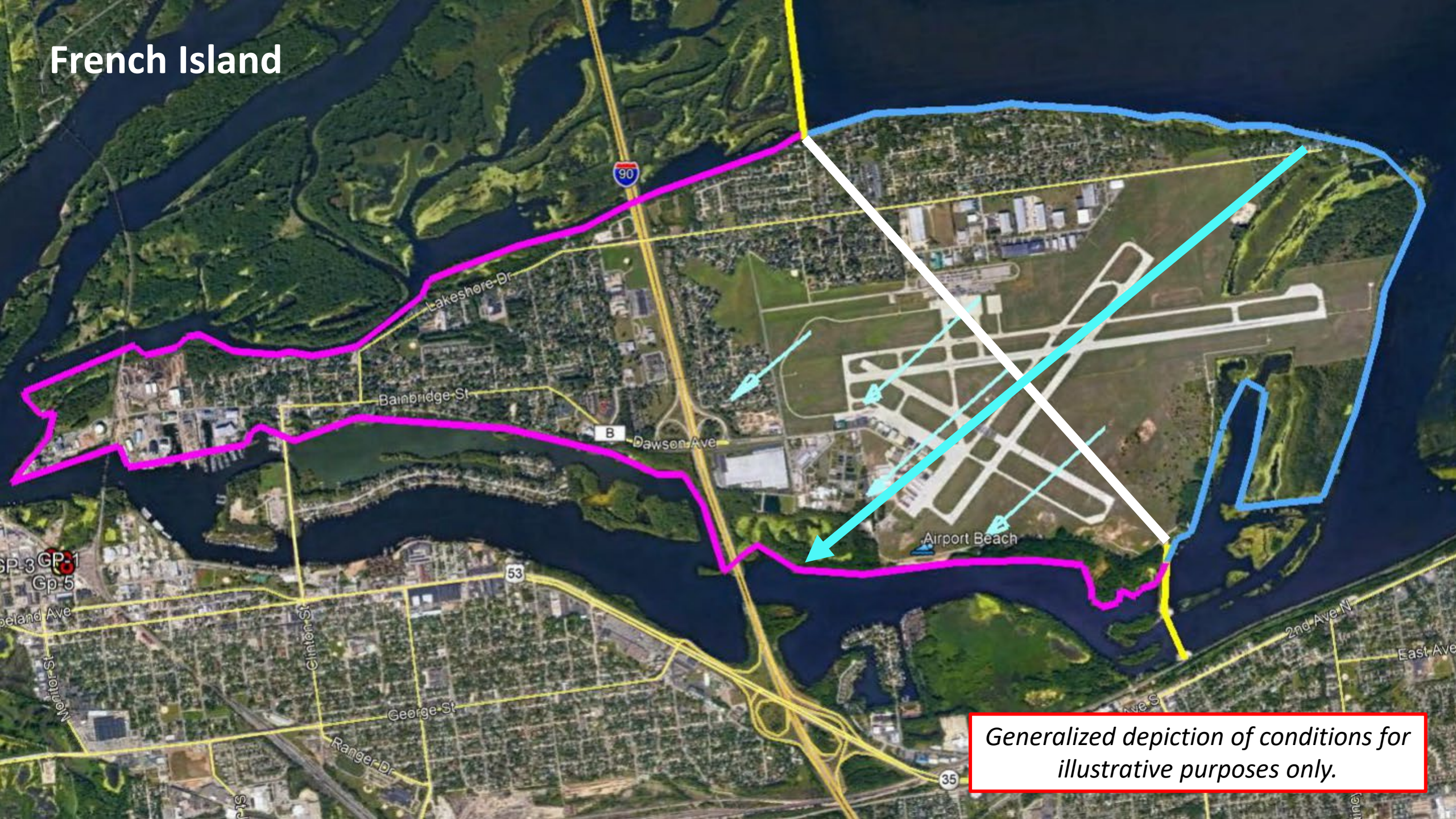
- Introduction of Panelists
- Overview from City – Mayor Kabat
- Results of PFAS Testing – John Storlie
- Questions and Answers – Public and Panelists

Finish by 6:30

Introduction of Panelists

- Tim Kabat, Mayor of La Crosse
- John Storlie, The OS Group
- Ian Turner, Airport Director, La Crosse Regional Airport
- Ken Gilliam, Fire Chief, La Crosse Fire Department
- Bernard Lenz, Utility Manager, City of La Crosse
- Dr. Curtis Hedman, Ph.D., Wisconsin Department of Health Services
- David Rozeboom, Wisconsin Department of Natural Resources
- Kyle Burton, Wisconsin Department of Natural Resources

French Island



Generalized depiction of conditions for illustrative purposes only.

Groundwater Flow

Lake Onalaska

Groundwater Flow

Airport Beach

Black River

Generalized depiction of conditions for illustrative purposes only.



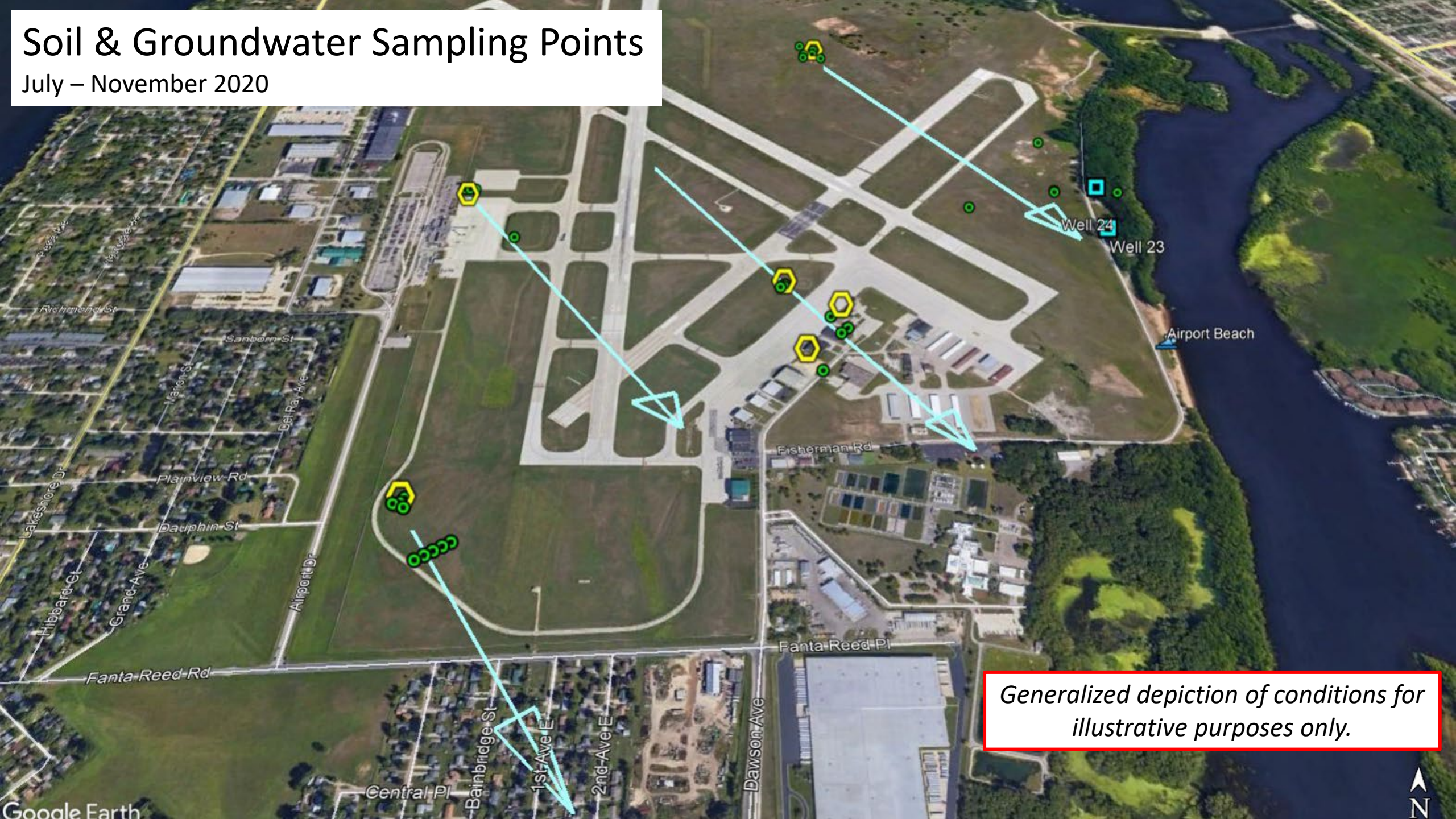
Source Areas Investigated
July 2020 - November 2020



Generalized depiction of conditions for illustrative purposes only.

Soil & Groundwater Sampling Points

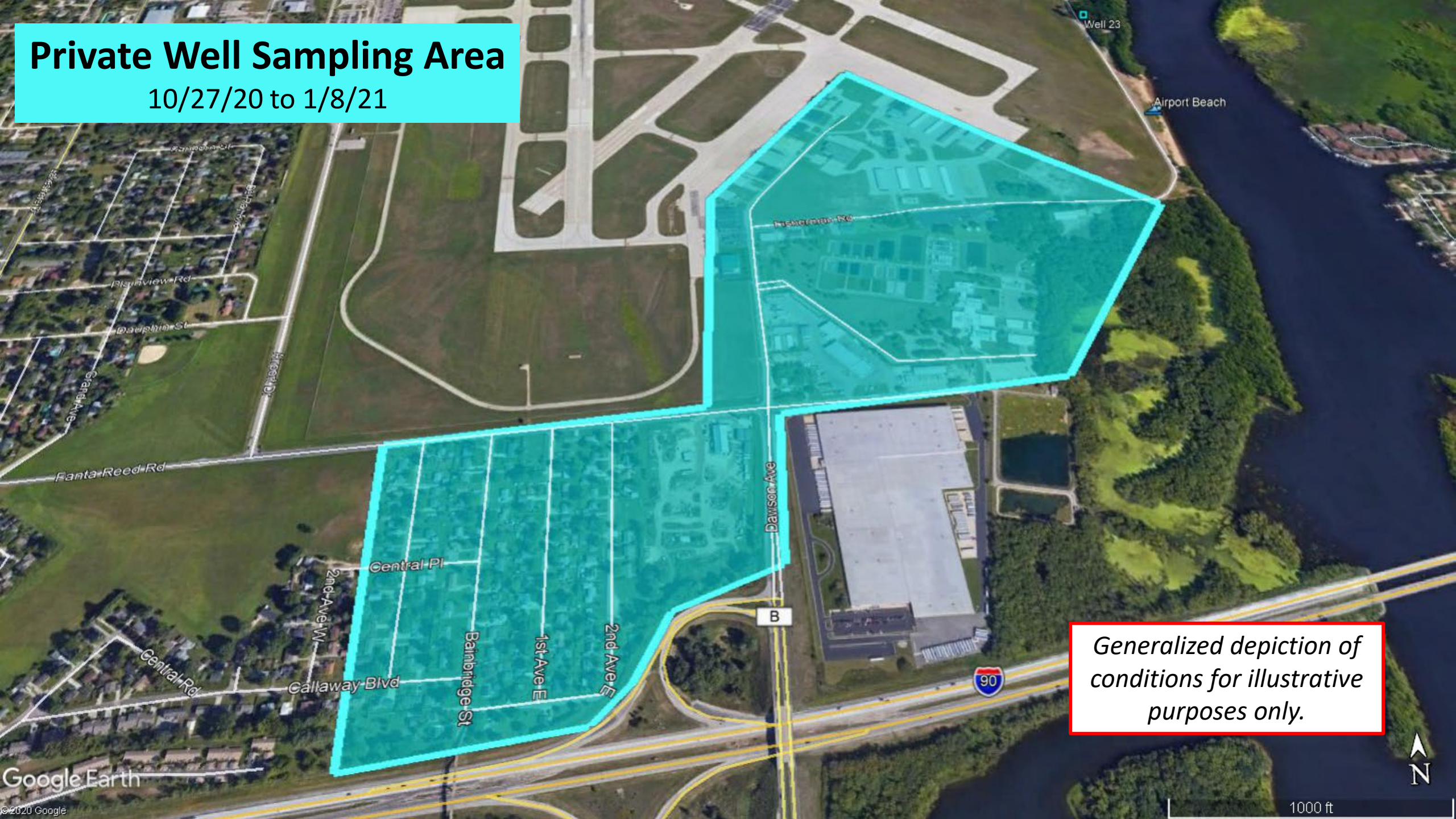
July – November 2020



Generalized depiction of conditions for illustrative purposes only.

Private Well Sampling Area

10/27/20 to 1/8/21



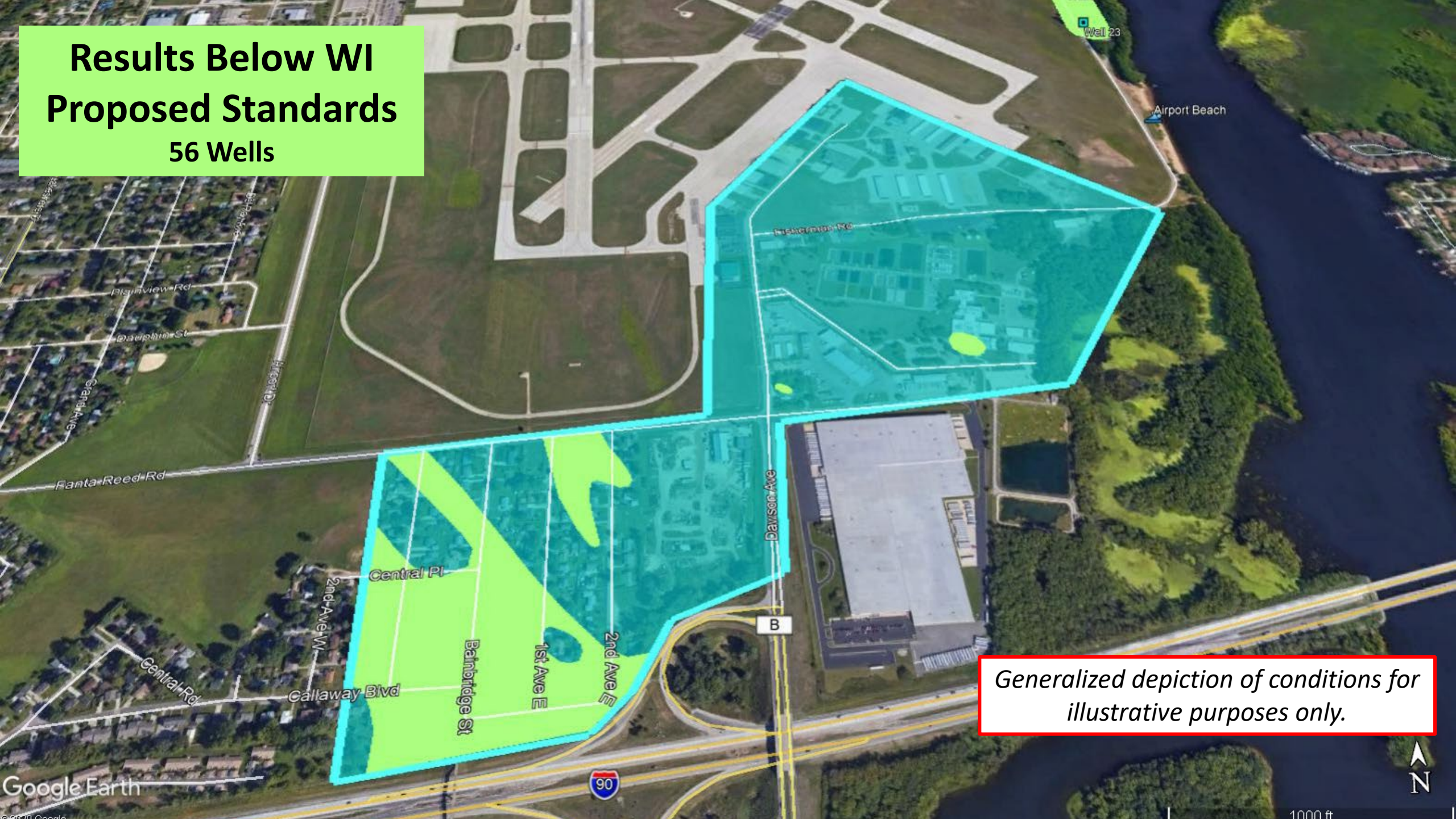
Generalized depiction of
conditions for illustrative
purposes only.

Private Well Sampling (through January 8)

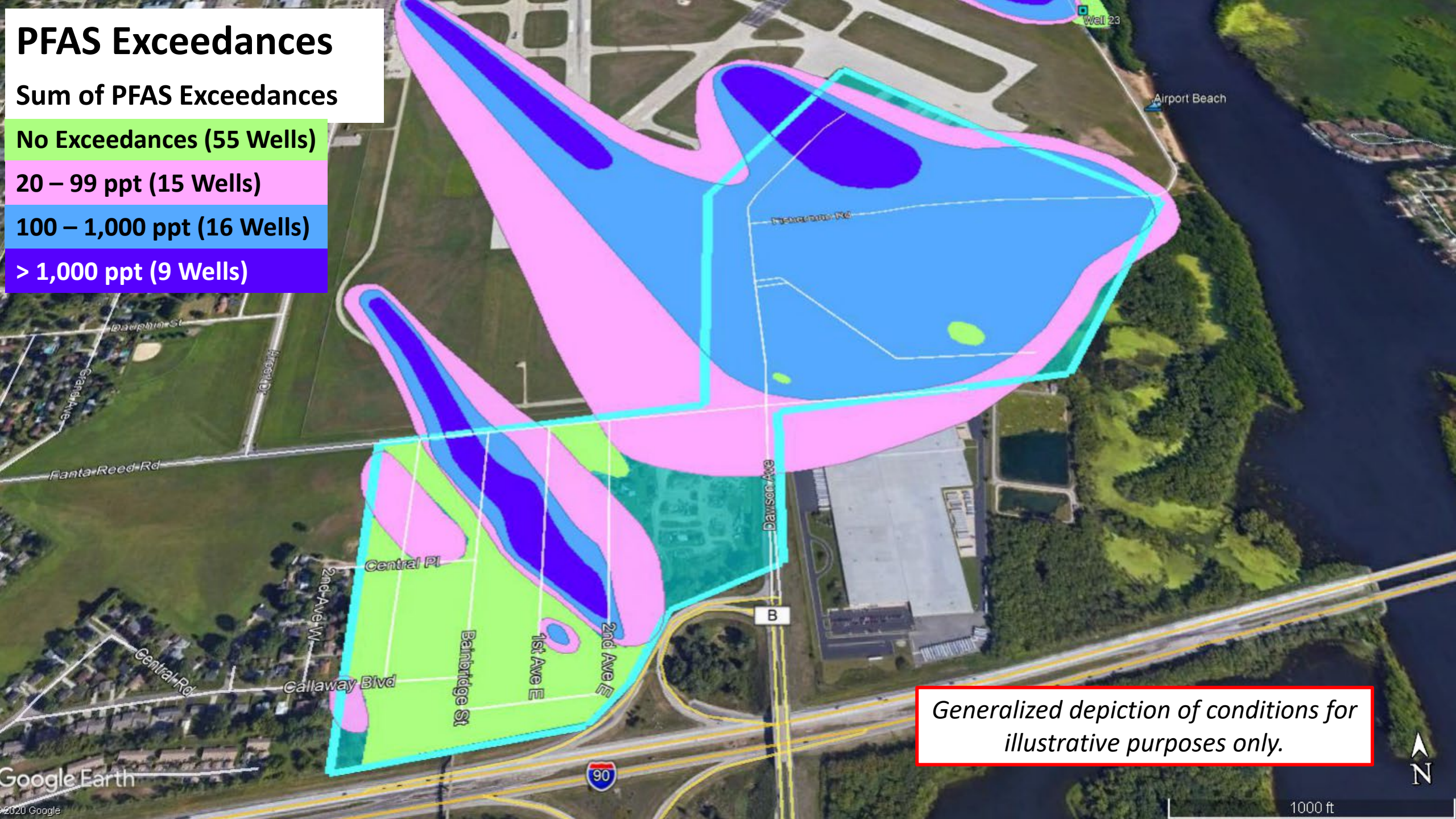
In the Target Sampling Area

- **109** wells sampled at **106** properties (10/27/20 - 1/5/21)
- **14** samples still waiting for results from lab
- **55** samples were **below** DNR's proposed standards
- **40** samples were **above** DNR's proposed standards
- **20** properties with wells that have declined or not responded
- **23** properties w/o wells that have not responded

Results Below WI Proposed Standards 56 Wells



*Generalized depiction of conditions for
illustrative purposes only.*



PFAS Exceedances

Sum of PFAS Exceedances

- No Exceedances (55 Wells)
- 20 – 99 ppt (15 Wells)
- 100 – 1,000 ppt (16 Wells)
- > 1,000 ppt (9 Wells)

Generalized depiction of conditions for illustrative purposes only.

PFAS Exceedances

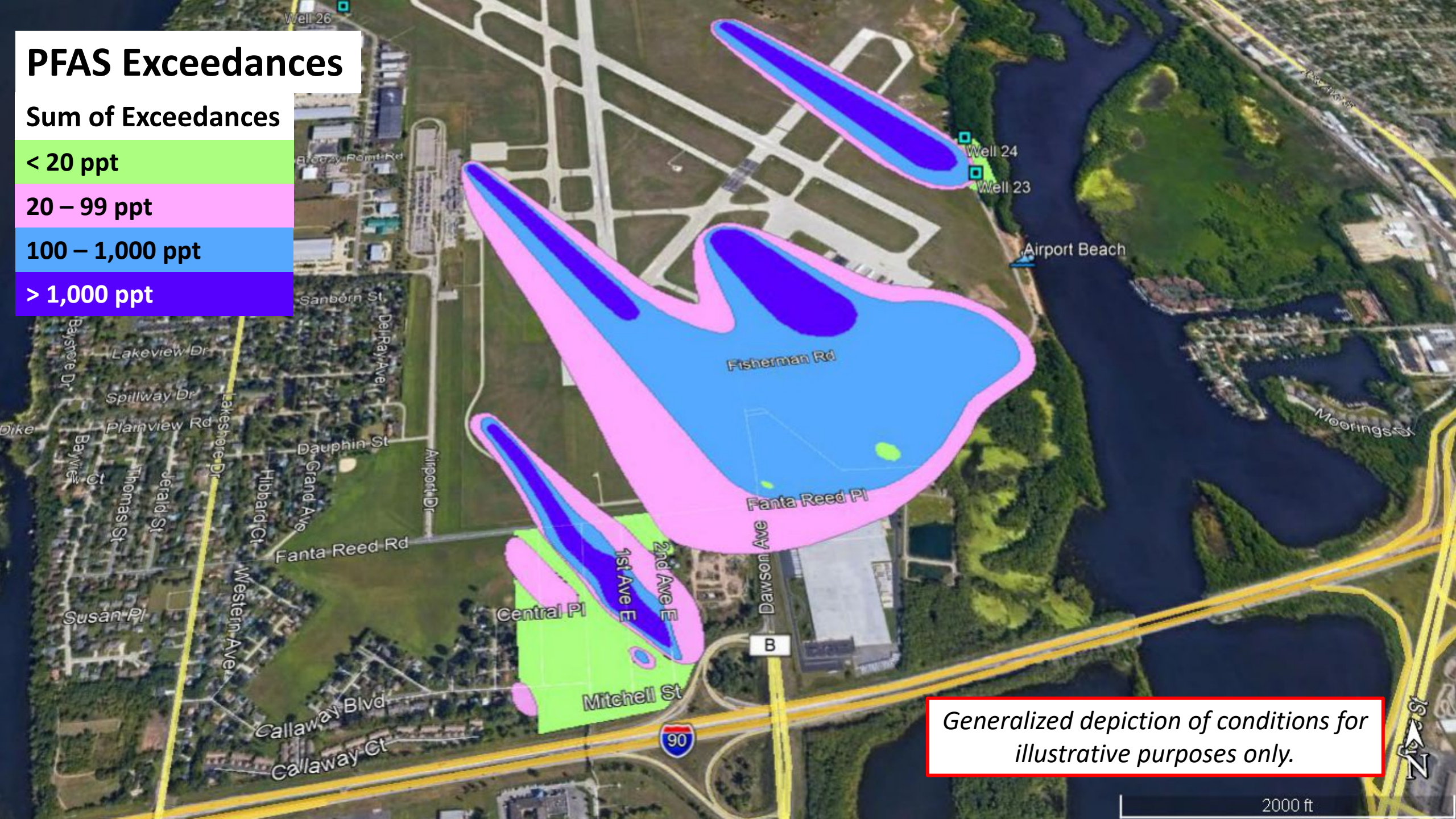
Sum of Exceedances

< 20 ppt

20 – 99 ppt

100 – 1,000 ppt

> 1,000 ppt



Generalized depiction of conditions for illustrative purposes only.

2000 ft

Bottled Water

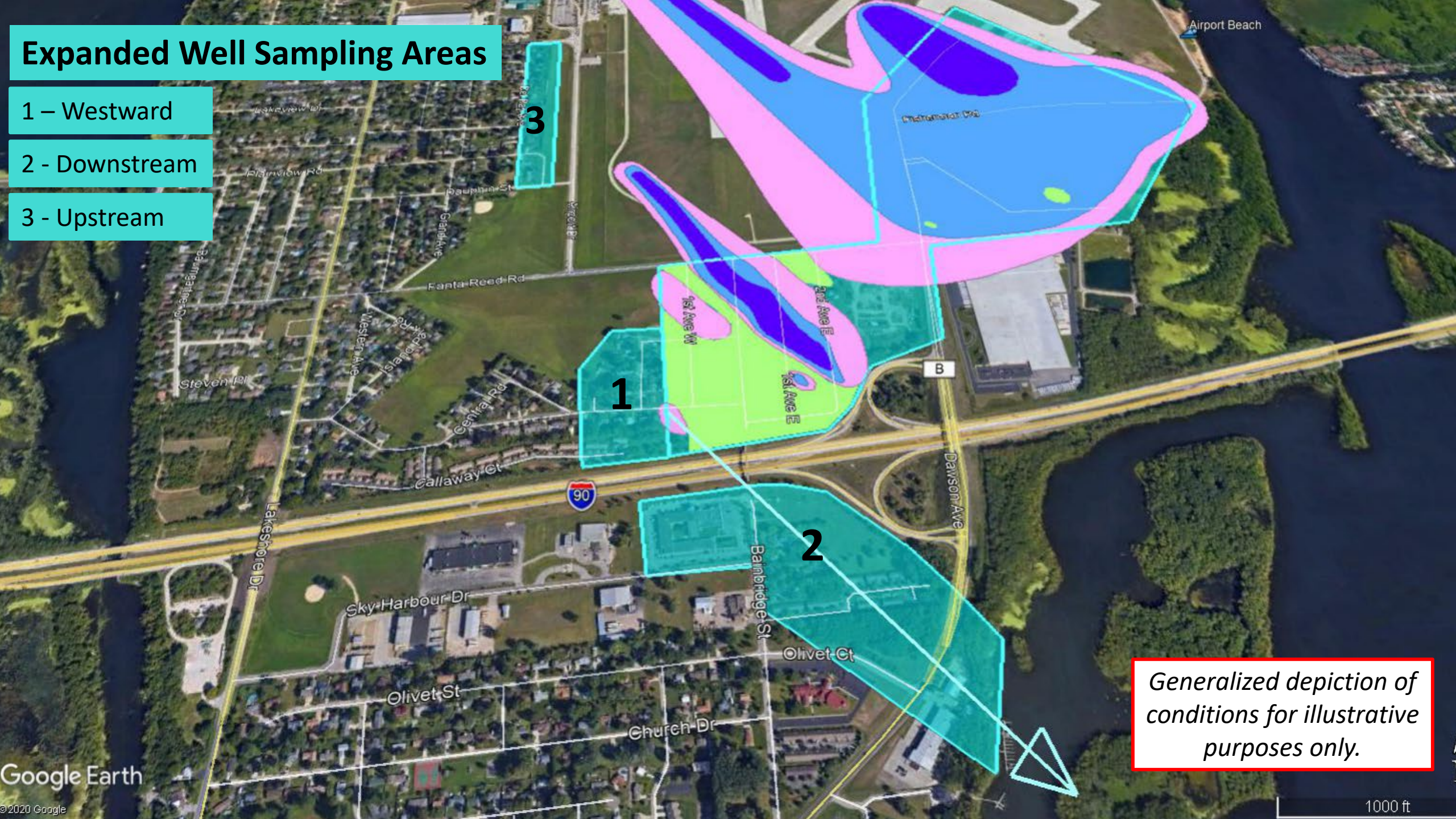
- Requested by and provided to 32 of 36 homes eligible
 - 4 wells non-drinking water wells
 - 4 homes have declined or not responded to bottled water offer
- Recommended for drinking, cooking, and brushing teeth
- Provided by Culligan of La Crosse
- Bottled from a municipal water system
- Filtered & treated
 - Carbon filter, reverse osmosis, distillation & other methods
- Sampled for PFAS
- No PFAS was detected in the sample of Culligan Water

Expanded Well Sampling Areas

1 – Westward

2 - Downstream

3 - Upstream



Generalized depiction of conditions for illustrative purposes only.

Next Steps

- Resample 8 – 10 wells that were just below standards
- Letters to about 50 Residents in Expanded Sampling Areas
- Residents sign and send access agreements back to OS Group
 - Mail, email or online at City webpage
- OS Group will sample wells
 - Outside spigots
- Prepare and submit updates for the DNR
- Continue investigation of groundwater at the airport

For more information

www.cityoflacrosse.org/wells

The OS Group

John Storlie, PG

PFAS@theOSgrp.com

608-668-2718

City of La Crosse

Tim Kabat, Mayor

kabatt@cityoflacrosse.org

608-789-7500